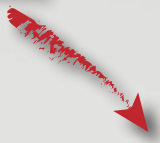


ETH

- Zones 1, 2, 21, 22
- Max. 110 dB
- Continuous operation
- Ex d protection

*Safety wire connecting
body and cover*



*Support bracket
mounting*



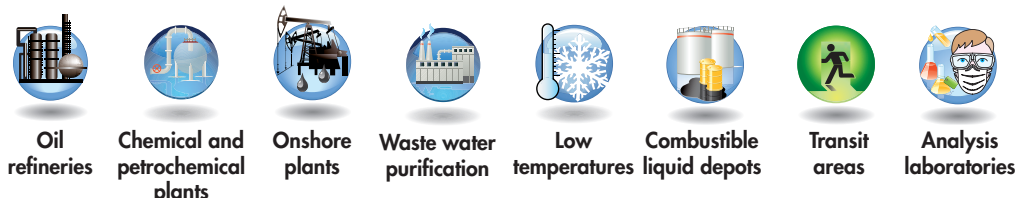
Connection entry



ETH series acoustic signals

ETH series sirens are used in closed environments where a warning system is needed and where the atmosphere is potentially explosive. ETH sirens are multi-functional. The five different types of sound can be programmed to provide warning in the event of danger or evacuation in the case of fire.

Application sectors:



CERTIFICATION DATA

Classification:	Group II	Category 2GD		
Installation: EN 60079.14	zone 1 - zone 2 (Gas)	zone 21 - zone 22 (Dust)	ETH12	
	zone 1 - zone 2 (Gas)		ETH20	
Marking:	CE II 2 GD Ex d IIC T6 Ex tD A21 IP65		ETH12	
	CE II 2 G Ex d IIC - IIB+H2 T4 Gb IP6x		ETH20	
Certification:	ATEX INERIS 02 ATEX 0074X		ETH12	
	ATEX ISSeP 11 ATEX 040X		ETH20	
Standards:	CENELEC EN 60079-0: 2006/09, EN 60079-1: 2004/07, EN 61241-0: 2006, EN 61241-1: 2004, EN 60079-31: 2009 and EUROPEAN DIRECTIVE 2014/34/UE			
Class temperature:	85°C (T6)	135°C (T4)	200°C (T3)	
Ambient temperature:	-20°C +55°C	ETH12		
	-50°C +60°C	ETH20		

ETH series acoustic signals



MECHANICAL FEATURES

Body and cover:	Low copper content aluminium alloy
Safety wire:	Steel
Bell housing:	Chrome coloured ABS plastic
Gasket:	Acid, hydrocarbon and high temperature resistant silicone
Bolts and screws:	Stainless steel
Mounting:	Direct to 3/4" entry or with mounting bracket (available on request)
Entries:	1 x 3/4" Rc UNI ISO 7/1
Coating:	Epoxy coating Ral 7000 (squirrel grey)

ELECTRICAL FEATURES

ETH-12 siren

Rated voltage:	12/24 - 48 - 110 - 230 V ac/dc
Frequency:	50/60/0 Hz
Driver impedance:	8 Ω
Operation:	Continuous

ETH-20 siren

Rated voltage:	12/24 - 48 - 110 - 230 V ac/dc
Frequency:	50/60/0 Hz
Driver impedance:	16 Ω
Operation:	Continuous

ACCESSORIES AVAILABLE / SPECIAL REQUESTS

Cable gland: FGAB2BK for armoured cable or FB2BK for non-armoured cable
Adjustable support bracket
Epoxy vinyl coating in different colours
NPT or ISO M25 threads
Body in cast iron EN-GJL-200 or stainless steel AISI 316L

ETH series selection chart

Code	Programmable sounds	Voltage	Rated current	Power input	Sound level		Weight kg	mm
					Frequency	Db/1m		
ETH-12MD/12-24V	32	12 - 24 V ac/dc	0,10 - 0,12 A	7 W	340 - 2000 Hz	109	1,2	230x150x150
ETH-12MD/48VCA	32	48 V ac	0,06 A	7 W	340 - 2000 Hz	107	1,4	230x150x150
ETH-12MD/48VCC	32	48 V dc	0,06 A	7 W	340 - 2000 Hz	107	1,2	230x150x150
ETH-12MD/110VCA	32	110 V ac	0,02 A	7 W	340 - 2000 Hz	109	1,4	230x150x150
ETH-12MD/110VCC	32	110 V dc	0,02 A	7 W	340 - 2000 Hz	109	1,4	230x150x150
ETH-12MD/230VCA	32	230 V ac	0,012 A	7 W	340 - 2000 Hz	109	1,4	230x150x150
ETH-20MD/12-24V	32	12 - 24 V ac/dc	0,10 - 0,12 A	10 W	340 - 2000 Hz	113	3,1	390x280x280
ETH-20MD/48VCA	32	48 V ac	0,06 A	10 W	340 - 2000 Hz	111	3,2	390x280x280
ETH-20MD/48VCC	32	48 V dc	0,06 A	10 W	340 - 2000 Hz	111	3,1	390x280x280
ETH-20MD/110VCA	32	110 V ac	0,02 A	10 W	340 - 2000 Hz	113	3,2	390x280x280
ETH-20MD/110VCC	32	110 V dc	0,02 A	10 W	340 - 2000 Hz	113	3,2	390x280x280
ETH-20MD/230VCA	32	230 V ac	0,012 A	10 W	340 - 2000 Hz	113	3,2	390x280x280

Main sounds

(32 selectable sounds, view safety maintenance and mounting instructions)

TWIN TONE: 440 Hz / 0.4 sec alternated with 554 Hz / 0.1 sec

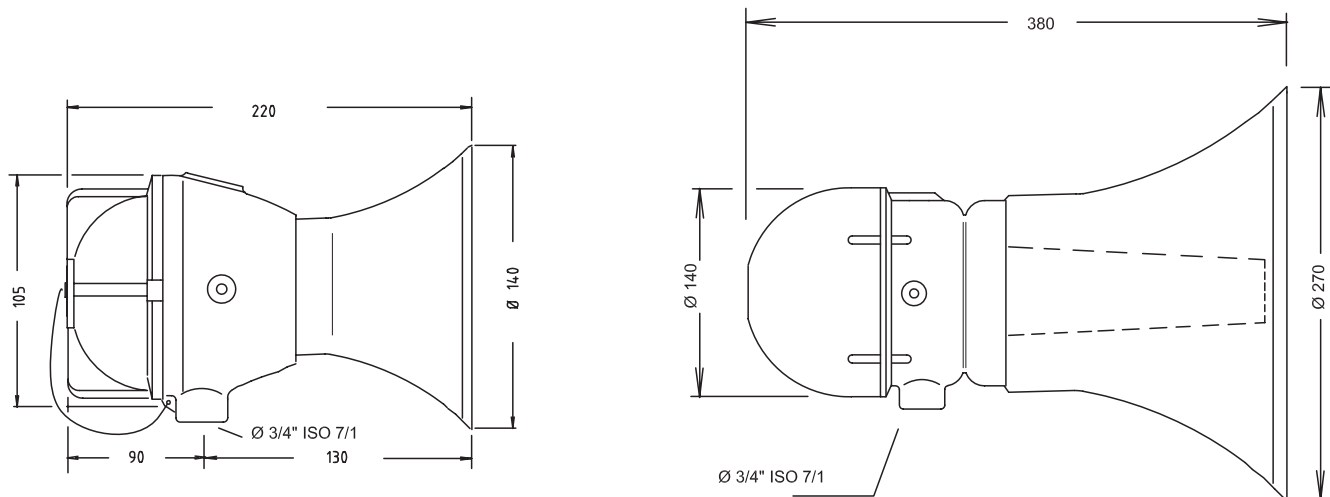
YELP: Increasing and decreasing scale. Fast from 650 to 1600 Hz

WAIL: Increasing and decreasing scale. Slow from 650 to 1600 Hz





INTERMITTENT: 554 Hz, 1 sec ON - 1 sec OFF

FIXED NOTE: 554 Hz continuous.

DIMENSIONAL DRAWINGS



Dimensions in mm

ILLUSTRATION	DESCRIPTION	MODEL	FEATURES	CODE	KEY
	Adjustable support bracket	ETH-12	Material: galvanised steel	K-340	 
		ETH-20		K-340/1	
	Cable gland		For cable gland models and codes see www.cortemgroup.com	NAVB2B NEVB2B	